

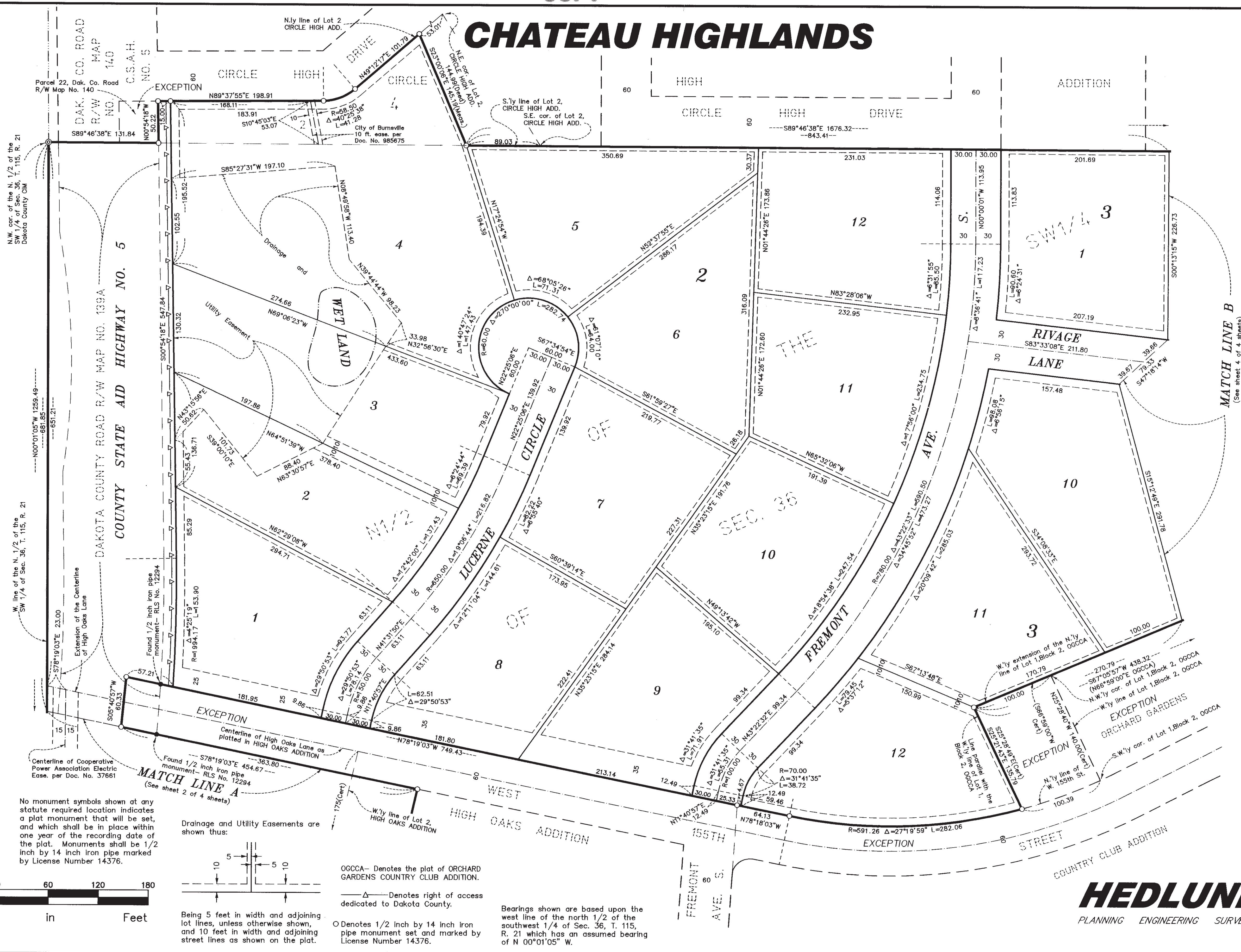
CHATEAU HIGHLANDS

3 NUMBER

DRAWING NUMBER

DRAWING NUMBER

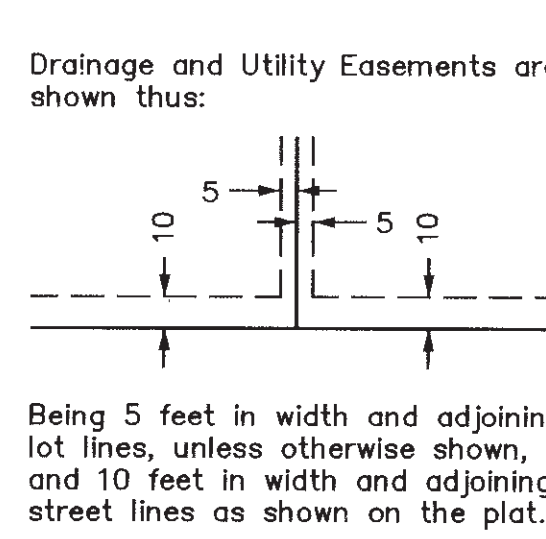
DRAWING NUMBER



N.W. cor. of the N. 1/2 of the SW 1/4 of Sec. 36, T. 115, R. 21
Dakota County CIM

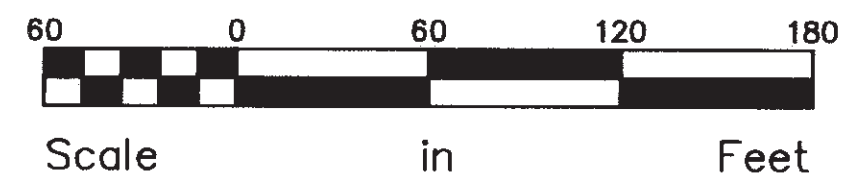
W. line of the N. 1/2 of the SW 1/4 of Sec. 36, T. 115, R. 21
---N00°01'05"W 1259.49---
---S81°18'58"W 651.21---

No monument symbols shown at any statute required location indicates a plat monument that will be set, and which shall be in place within one year of the recording date of the plat. Monuments shall be 1/2 inch by 14 inch iron pipe marked by License Number 14376.



OGCCA - Denotes the plat of ORCHARD GARDENS COUNTRY CLUB ADDITION.
 Δ - Denotes right of access dedicated to Dakota County.
 ○ - Denotes 1/2 inch by 14 inch iron pipe monument set and marked by License Number 14376.

Bearings shown are based upon the west line of the north 1/2 of the southwest 1/4 of Sec. 36, T. 115, R. 21 which has an assumed bearing of N 00°01'05" W.



HEDLUND
 PLANNING ENGINEERING SURVEYING

3 of 4
FORM - FORM - 57

NEW HOPE, MINNESOTA
 SHARD PRODUCTS • NEW HOPE, MINNESOTA
 PRODUCED BY PHILIP NUMBER 6532
 SHARD PRODUCTS • NEW HOPE, MINNESOTA
 PRODUCED BY PHILIP NUMBER 6532
 SHARD PRODUCTS • NEW HOPE, MINNESOTA
 PRODUCED BY PHILIP NUMBER 6532